

LDP20



موتور پمپ لیو سری LDP



Application

- To transfer clean water with liquid temperature between 0°C and 40°C
- Application in water supply and drainage for factories, mines, municipal facilities as well as field irrigation, ect.

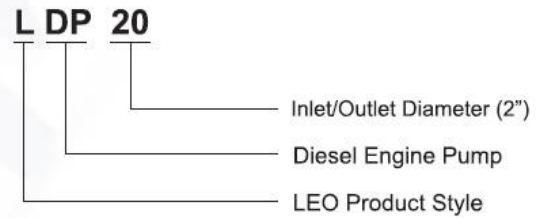
Features

- New unique design with ergonomic feature
- Portable and compact pump frame
- High quality motor with excellent performance and long service life
- Impeller designed with high efficiency hydraulic system
- Low fuel consumption

Engine

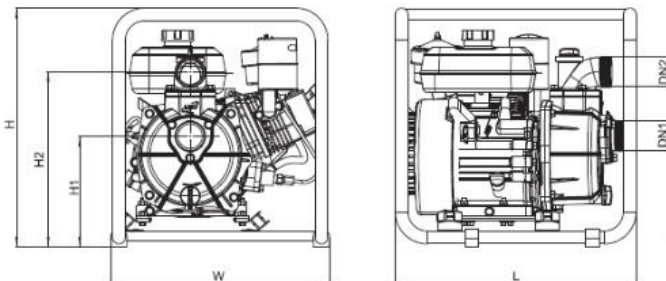
- Single cylinder, 4-stroke, air cooled
- Max.power :4 HP
- Displacement: 207 cc
- Rated speed: 3000±150pm

Identification Codes



Technical Data

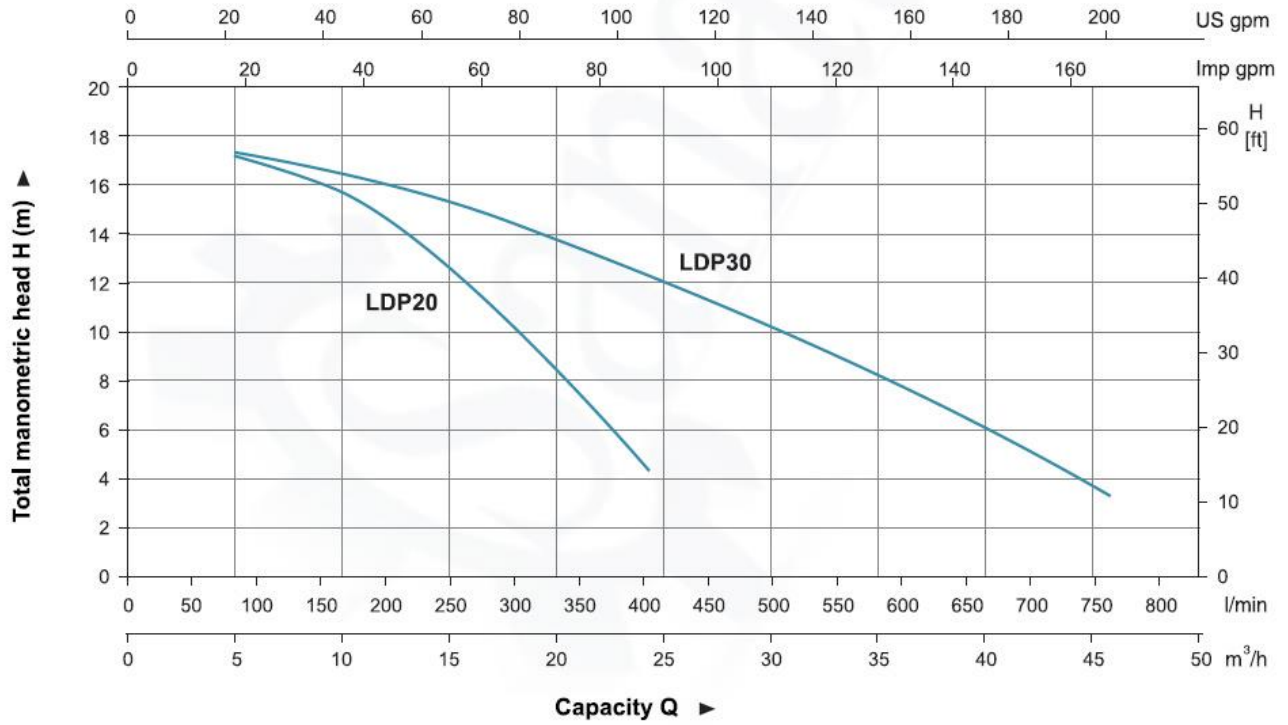
MODEL	POWER	Q (m ³ /h)	0	5	10	15	20	25	30	35	40	45
	HP	Q (l/min)	0	83.3	166.7	250	333.3	416.7	500	583.3	666.7	750
LDP20	4	H (m)	18	17	15	12.5	8	-	-	-	-	-
LDP30	4		18	17	16.5	15.5	14	12	10	8	6.4	4.4



Dimension

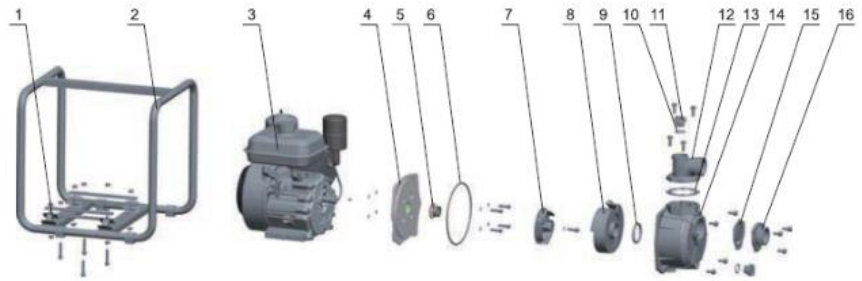
Model	DN1	DN2	L (mm)	W (mm)	H (mm)	H1 (mm)	H2 (mm)
LDP20	2"	2"	470	427	466	181	341
LDP30	3"	3"	470	427	466	225	378

Hydraulic Performance Curves



Materials Table

No.	Part	Material
1	Damper	
2	Frame	Steel
3	Diesel engine	
4	Pump cover	Aluminum
5	Mechanical seal	Carbon/Ceramic
6	O-ring	NBR
7	Impeller	HT200
8	Diffuser	HT200
9	Seal ring	NBR
10	O-ring	NBR
11	Plug	ABS
12	Outlet	Aluminum
13	Gasket	NBR
14	Pump body	Aluminum
15	One-way valve	NBR
16	Inlet	Aluminum



Package Information

Model	GW (Kgs)	L (mm)	W (mm)	H (mm)	Quantity (PCS/20 TEU)
LDP20	30.7	485	435	505	244
LDP30	31.7	485	435	505	244

